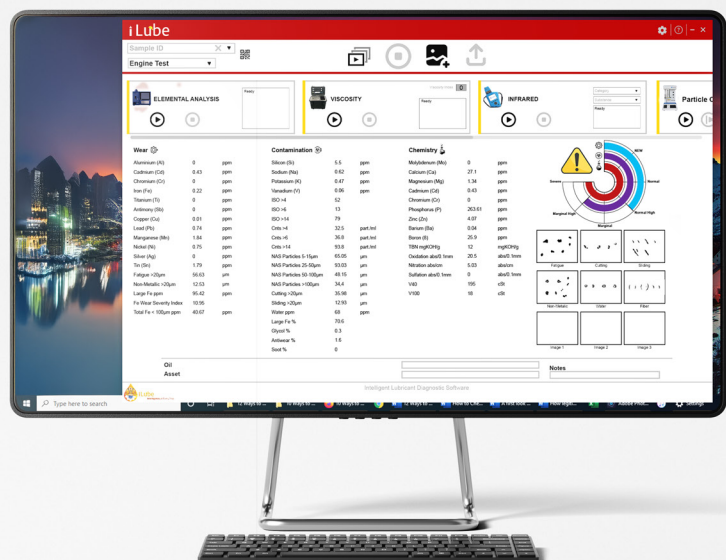
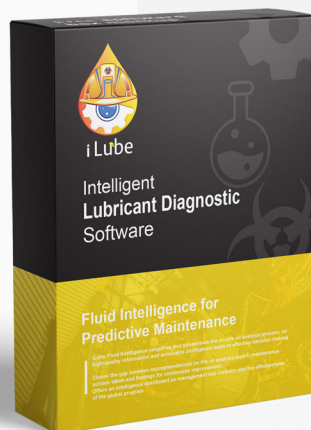




PROTECH
YOUR LAB EQUIPMENT SOURCE

Intelligent Lubricant Diagnostic Platform

Transforming Complex Data into Clear Maintenance Decisions.



The Future of Multi-Vendor Fluid Intelligence.

ProTech Analytical

1. Empowering Your Maintenance

1. The Power of Flexibility: A Vendor-Neutral Ecosystem

iLube is engineered to be the “Central Brain” of your oil analysis operations. Unlike traditional, closed platforms that restrict you to specific hardware, iLube provides a truly open architecture.

. Eliminate Vendor Lock-in: Seamlessly integrate with laboratory instruments from multiple manufacturers, allowing you to choose the best hardware for your specific needs.

. Unified Data Stream: Consolidate data from various sources into one clean, actionable dashboard, removing the need to manage multiple software licenses.

. Future-Proof Scalability: As your laboratory grows or your equipment changes, iLube adapts, ensuring your historic data remains accessible and integrated.

2. Advanced Performance Features

Multi-Vendor Integration & Connectivity

. Plug-and-Play Compatibility: Directly connect with a wide range of diagnostic devices to sync raw data automatically.

. Enterprise Integration (API): Built-in support for linking with your existing CMMS or ERP systems to streamline maintenance workflows.

. Universal Data Acquisition: Break the boundaries of your data sources. iLube seamlessly aggregates data from any oil testing equipment and wireless sensor networks, transforming your laboratory into a fully connected, smart environment.

Smart Predictive Intelligence

. Automated Trend Tracking: The software monitors key parameters over time, identifying subtle shifts in lubricant health before they escalate into equipment failure.

Intelligent Alert System: Receive smart notifications when the system detects abnormal trends or values

. Lubricant Condition Radar: Utilize advanced visualization tools to see a comprehensive overview of Wear, Contamination, and Chemistry in a unified diagnostic view.

3. Precision Reporting & Deep Analytics

Data is only valuable if it is understandable. iLube turns complex chemistry into clear, professional documentation.

Fully Customizable Reports: Tailor your output based on specific criteria, including:

. Customer Profiles: Branded reports for external clients.

. Equipment Type: Specific parameters for turbines, engines, or gearboxes.

. Test Category: Focused views on Viscosity, Oxidation, or Particle Count, Elemental Analysis.

. Multi-Format Exporting: Seamlessly export your findings in PDF, Excel, or JSON formats for easy sharing and further data manipulation.

4. Universal Access: Performance Anywhere

Whether you are on the factory floor or in a corporate office, iLube is always within reach.

. Cloud & Local Deployment: Choose between a secure Web Interface for global accessibility or a Desktop Pro version for localized, high-security environments.

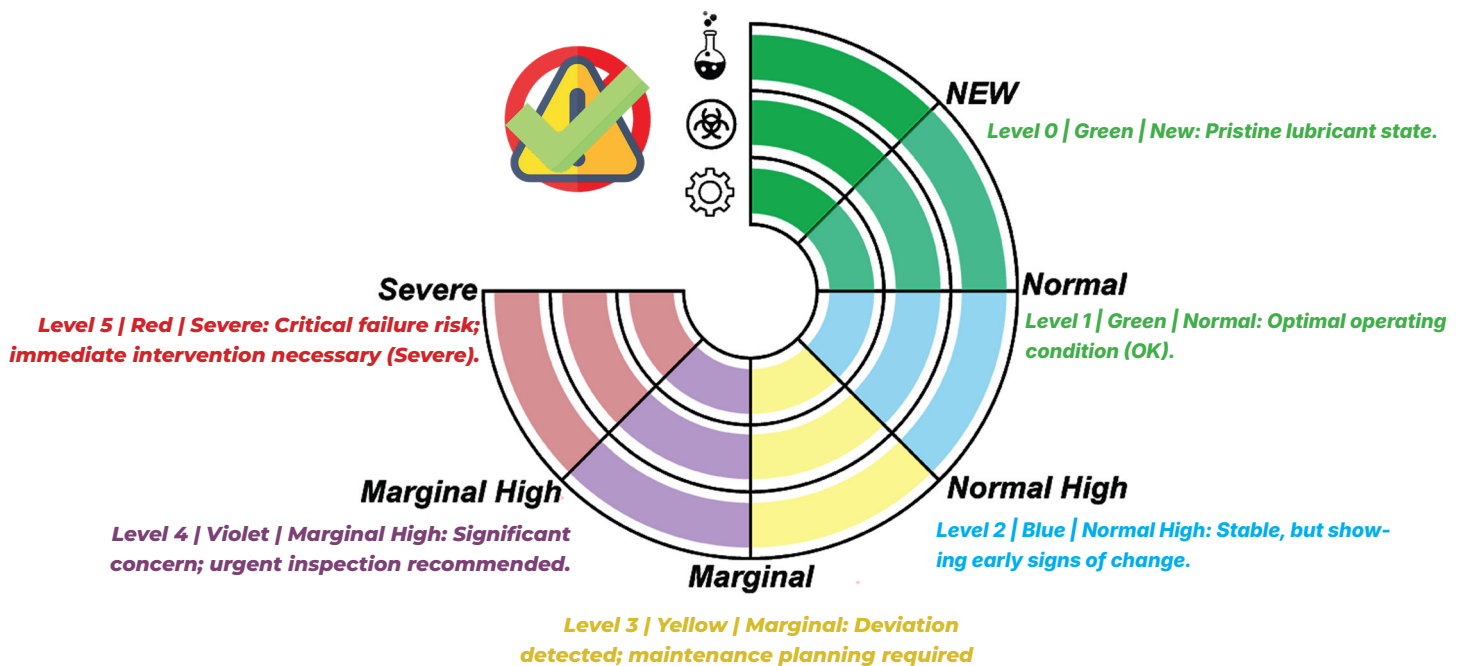
. Multi-Language Support: A global tool for global teams, featuring a user interface that speaks your language.

. Real-Time Monitoring: Instant updates ensure that the health of your critical assets is monitored 24/7, providing peace of mind and reducing unplanned downtime.

2. Empowering Your Maintenance

From Data Complexity to Instant Clarity

The iLube Speedometer system translates complex laboratory results into an intuitive visual language. Each gauge monitors the three essential pillars of machine health: Chemistry (Flask), Contamination (Bio-hazard), and Wear (Gear).



Wear (Gear Icon)

"Monitors mechanical degradation and the presence of metallic particles, ensuring the physical integrity of your machinery."



Contamination (Biohazard Icon)

"Tracks external impurities, water, and debris that could compromise system performance."



Chemistry (Flask Icon)

"Analyzes the chemical stability and oxidation levels of the lubricant to determine its remaining useful life."



Case A: The Ideal Baseline (OK)

All rings are in the Green/Blue zone



Case B: Transitional Warning (Alert)

At least one ring has shifting into Yellow/Violet zones

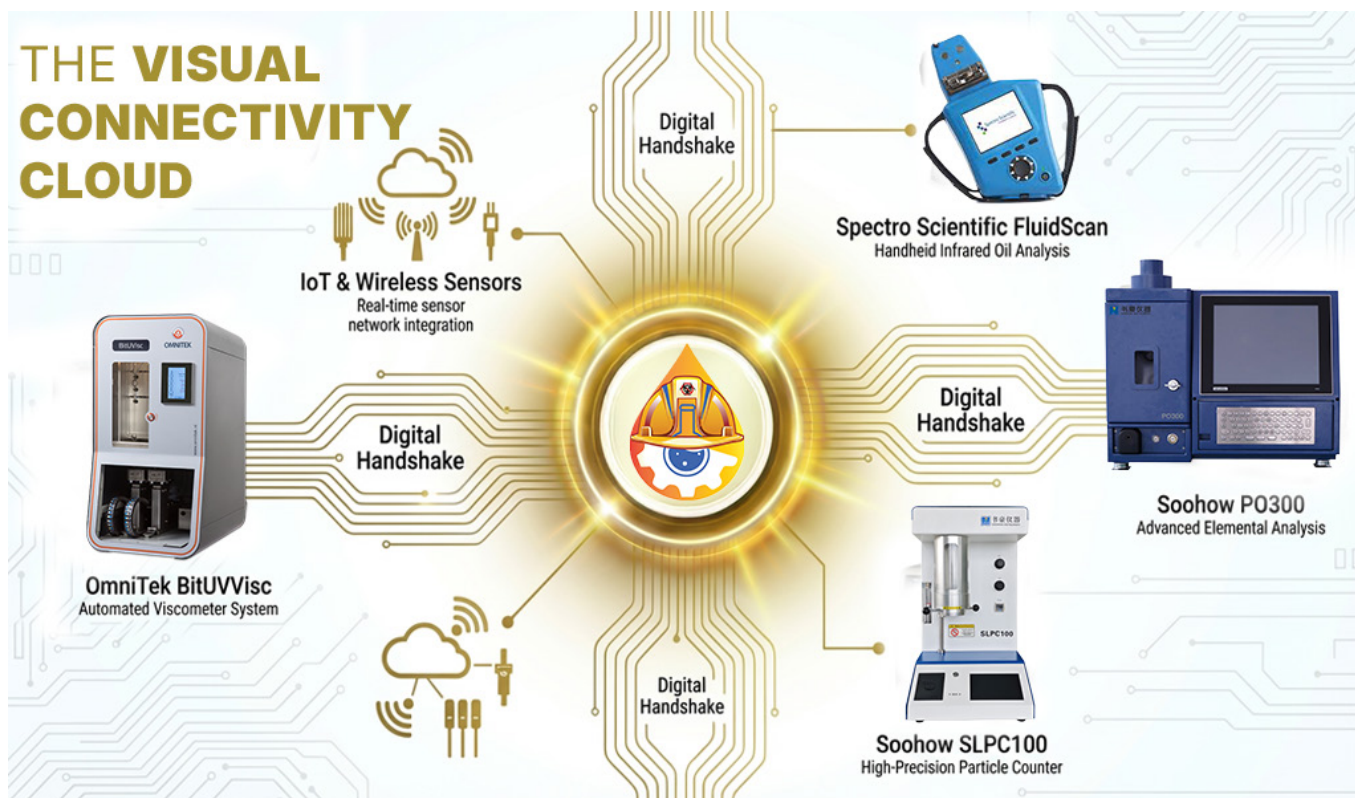


Case C: Critical Failure Risk (Severe)

At least one ring has reached the Red zone

Transform Lab Results into Action

We don't just deliver data; we deliver decisions. iLube automatically converts complex laboratory results into clear, executable maintenance actions to ensure maximum operational continuity and reliability.



3. The Universal Ecosystem: True Multi-Vendor

"iLube is the universal language for your fluid intelligence, designed to unite a world of diverse hardware into one powerful platform."

"Break free from vendor lock-in." "iLube features a truly open architecture that seamlessly integrates with laboratory instruments from any manufacturer." "We support limitless connectivity with global diagnostic devices and sensor networks, ensuring you can choose the best hardware for your specific needs without any software restrictions or capacity limits."

Key Connectivity Features

Plug-and-Play Compatibility: Directly connect with a limitless range of diagnostic devices to sync raw data automatically.

Unified Data Stream: Consolidate data from all your different brands and devices into one clean, actionable dashboard.

Unlimited Scalability: As your laboratory grows or your equipment changes, iLube adapts to ensure your data remains integrated and accessible.

Universal Data Acquisition: Aggregate data from any oil testing equipment and wireless sensor networks, transforming your lab into a fully connected smart environment.

4. Technical Excellence & Deployment

1. iLube Deployment Options

To ensure maximum compatibility with your operational infrastructure, iLube is available in two distinct versions:

Feature	iLube Cloud	iLube Pro
Accessibility	Global web-based access via browser.	Localized server installation.
Data Storage	Secure Cloud hosting with auto-sync.	Internal company database control.
Updates	Automatic real-time updates.	Managed scheduled updates.

2. Technical Specifications

iLube is built on a modern architecture to ensure high performance and ease of integration:

.Operating Systems: Fully compatible with Windows 10/11.

.Browser Support: Optimized for Chrome, Firefox, and Microsoft Edge.

.Integration (API): Advanced API support for seamless connection with CMMS (Computerized Maintenance Management Systems) and ERP (Enterprise Resource Planning) solutions.

.Multi-Vendor Connectivity: Direct digital handshake with a wide variety of industrial laboratory instruments.

3. Why Partner with ProTech Analytical?

By choosing iLube, you are not just buying software; you are investing in a partnership focused on reliability and precision. Our solution provides:

.Vendor Neutrality: Freedom to use any hardware you choose.

.Scalability: A system that grows from a single lab to an enterprise network.

.Expert Support: Localized expertise and technical guidance.

5. The Intelligent Brain: Beyond Standard Diagnostics

1. Expert System: Learning from Equipment History

- **Machine Learning Integration:** iLube isn't just a static tool; it's an expert system that learns from your equipment's specific history over time.
- **Adaptive Insights:** The more data you feed the system, the more accurate it becomes in identifying unique failure patterns for your specific machinery fleet.

2. Prognostic Analysis: Predictive Remaining Service Life

- **Predicting the Future:** Move from "what happened" to "what will happen." Our prognostic engine calculates the Remaining Service Life (RSL) of both the lubricant and the machine components.
- **Proactive Planning:** Schedule overhauls and oil changes exactly when needed, avoiding both premature maintenance and catastrophic failures.

3. Multi-Site Collaboration: Global Enterprise Sync

- **Unified Intelligence:** Connect multiple plants and laboratories across different regions into one synchronized enterprise network.
- **Shared Knowledge:** Enable teams to share diagnostic insights and standardized maintenance strategies globally, ensuring consistent quality across the entire organization.

4. Comprehensive Service Management Reporting

- **Manager-Ready Documentation:** Generate high-level executive summaries that include cost-saving KPIs, repair histories, and fleet-wide health trends.
- **Actionable Dashboards:** Tailored views for maintenance managers that simplify complex lab data into clear budget and resource planning tools.



ProTech Analytical

31 Sabel Elkhazndara St, El Abbassia,
Cairo, Egypt, 11517.

Telephone: +20 (10)0 143 4196

E-mail: sales@protechanalytical.com

Website: www.protechanalytical.com