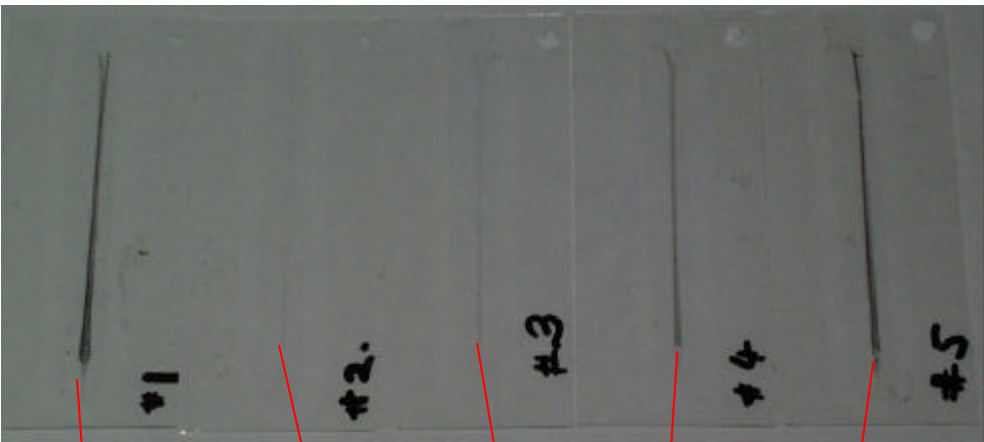
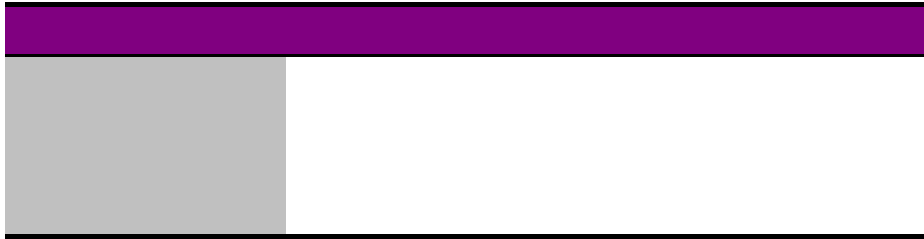




**SPECTRO INC.**  
Industrial Tribology Systems

*Pro Tech*  
Import, Export & Maintenance

- 
- 
- 
- 
- 
-



**Lasernet Fines - C**

Customer/Site	Hrs/mile since overhaul	536	Operator	ANDERSONDP	
Machine	610200008	Hrs/mile since oil Chg	25	Sample Date	03/28/2001
Equip Name	Samp#	Fluid Type	10W30	Analysis Date	07/03/2001 21:54
Unit (Port)	1	Notes		Sample Seq #	1

All Particles   
  % Large Particl   
  Cutting Wear   
  Sliding Wear   
  Fatigue Wear   
 Trend By

5-15 micron   
  15-25 micron   
  25-50 micron   
  50-100 micron   
  >100 micron   
  >50 micron   
 Total

Total # Samples: 31  
 Sample Date: 02/21/2001    Seq #: 0  
 Earliest Sample  
 Latest Sample: 03/28/2001    Seq #: 1

Back    ◀    ▶    Wear Images    Print

**Lasernet Fines - C**

Customer/Site: \_\_\_\_\_ Notes: \_\_\_\_\_ Fluid Type: 10W30  
 Machine: 010210000 Sample: \_\_\_\_\_ Operating hrs/mile: \$ Sample: 02/21/2001 Seq# 0  
 Equip Name: \_\_\_\_\_ Hrs/mile since overhaul: \$ Operator: ANDERSONHP  
 Unit (Port): 1 Hrs/mile since oil Chg: \$ Analysis: 07/06/2001 02:39

Hydraulic	Wear Summary	Cutting Wear	Sliding Wear	Fatigue Wear	NonMetallic Wear
-----------	--------------	--------------	--------------	--------------	------------------

Total Part/ml: 57277.9 Vol(ml): 0.206  
 Avg Diameter: 1.7 # Frames: 1,055  
 Std Diameter: 3.5  
 Max Diameter: 62.0

	Num/ml	Mean (micron)	Std (micron)	Max size (microns)
Cutting:	23.6	34.1	9.0	49.7
Severe Sliding:	87.7	30.5	11.9	62.0
Fatigue:	128.2	23.5	3.7	37.8
NonMetallic:	13.5	37.1	6.2	43.0

Previous:  Current:

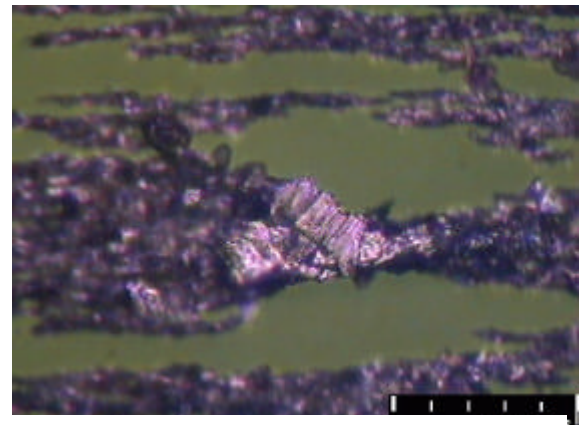
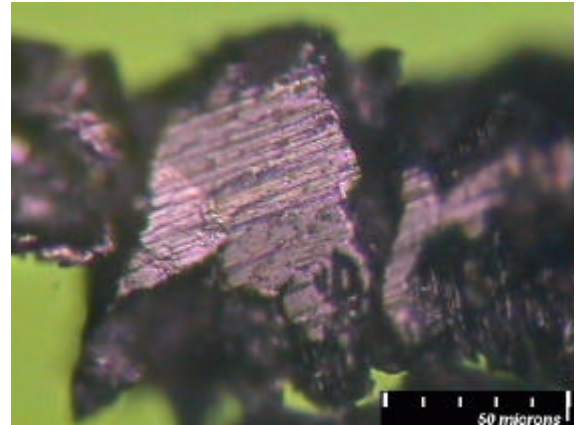
Particles/ml: 58,089

Maximum Diameter: 5-15um, 15-25um, 25-50um, >50um

# Samples=31

Back, Wear Images, Print, Export Current Sample, Trend / Diagnosis, Edit Sample Info

#objects: 182 object: 0 Filter: No Filter SAVE IMAGE SAVE ALL OBJECT PRINT IMAGE



**Lasernet Fines - C**

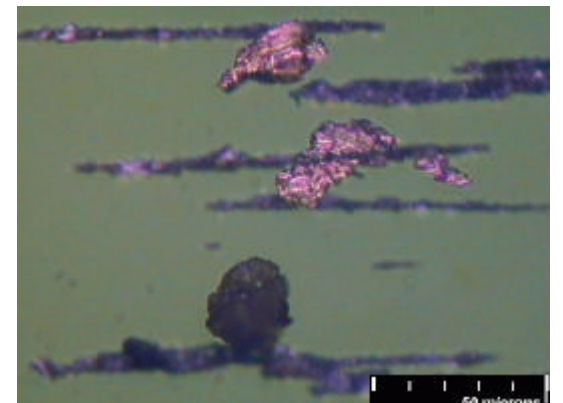
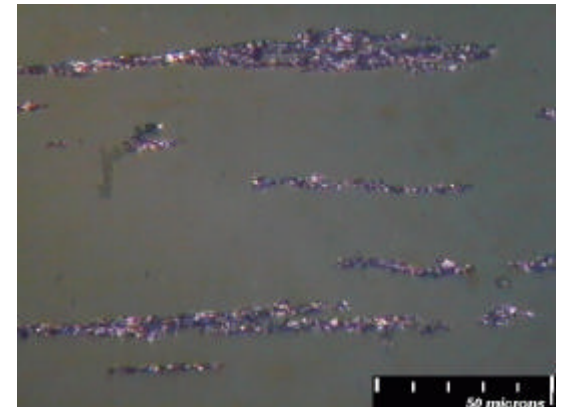
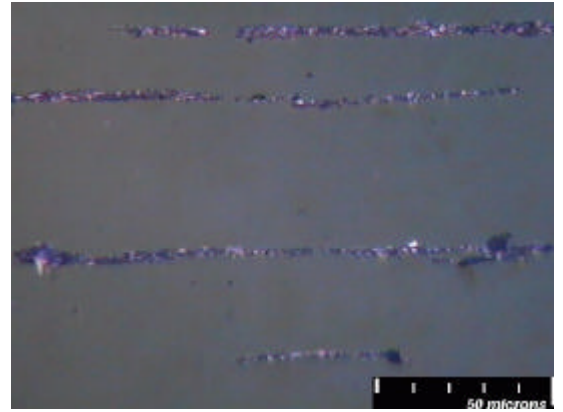
Customer Site: \_\_\_\_\_ Notes: \_\_\_\_\_ Fluid Type: 10W30  
 Machine: B1020000 Sample: \_\_\_\_\_ Operating Hrs/mile: 264 Sample: 03/09/2001 Seg# 0  
 Equip Name: \_\_\_\_\_ Hrs/mile since overhaul: 264 Operator: ANDERSONDP  
 Unit (Port): 1 Hrs/mile since oil Chg: 11 Analysis: 07/09/2001 21:47

Hydraulic	Wear Summary	Cutting Wear	Sliding Wear	Fatigue Wear	NonMetallic Wear
Total Part/ml: 1070.0	Vol(ml): 0.65				
Avg Diameter: 3.2	# Frames: 4,066				
Std Diameter: 6.4					
Max Diameter: 149.9					
	Num/ml	Mean (micron)	Std (micron)	Max size (microns)	
Cutting:	9.2	27.7	3.7	33.1	
Severe Sliding:	7.7	20.9	5.6	37.0	
Fatigue:	24.6	38.4	30.4	149.9	
NonMetallic:	1.5	20.9	0.0	20.9	

Previous  Current

# Samples=31

Back | Wear Images | Print | Export Current Sample  
 Trend / Diagnosis | Edit Sample Info



**Lasernet Fines - C**

BACK | #objects: 26 | object: 0 | Filter: No Filter | SAVE IMAGE | SAVE ALL OBJECT | PRINT IMAGE

Import, Export & Maintenance

**Lasernet Fines - C**

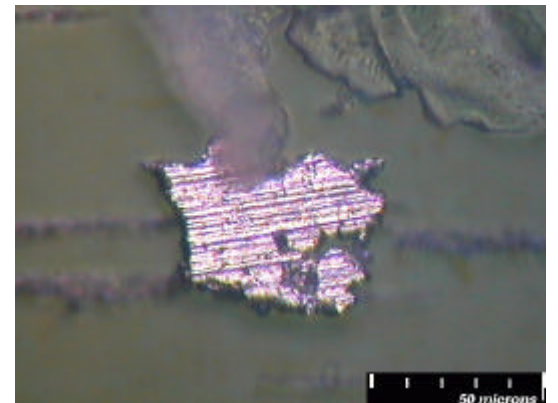
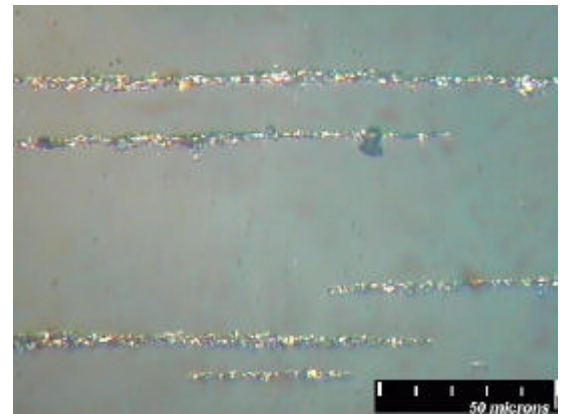
Customer Site: \_\_\_\_\_ Notes: \_\_\_\_\_ Fluid Type: 10W38  
 Machine: B10200000 Sample: \_\_\_\_\_ Operating Hrs/mile: 367 Sample: 03/16/2001 Seg# 0  
 Equip Name: \_\_\_\_\_ Hrs/mile since overhaul: 367 Operator: ANDERSONDP  
 Unit (Port): 1 Hrs/mile since oil Chg: 20 Analysis: 07/09/2001 21:54

Hydraulic	Wear Summary	Cutting Wear	Sliding Wear	Fatigue Wear	NonMetallic Wear
Total Part/ml: 745.4	Vol(ml): 0.065				
Avg Diameter: 2.5	# Frames: 4,065				
Std Diameter: 5.5					
Max Diameter: 96.2					
	Num/ml	Mean (micron)	Std (micron)	Max size (microns)	
Cutting:	3.1	25.4	1.3	26.7	
Severe Sliding:	1.5	96.2	0.0	96.2	
Fatigue:	7.7	27.8	7.3	42.2	
NonMetallic:	3.1	23.1	3.0	26.2	

Previous  Current

# Samples=31

Back    Wear Images    Print    Export Current Sample  
 Trend / Diagnosis    Edit Sample Info



**Lasernet Fines - C**

# objects: 12    object: 0    Filter: No Filter

BACK    <<    >>    SAVE IMAGE    SAVE ALL OBJECT    PRINT IMAGE



**Lasernet Fines - C**

Customer/Site: \_\_\_\_\_ Notes: \_\_\_\_\_ Fluid Type: 10W30  
 Machine: 61020003 Samp#: \_\_\_\_\_ Operating hrs/mile: 411 Sample: 03/20/2001 Seq#: 1  
 Equip Name: \_\_\_\_\_ Hrs/mile since overhaul: 411 Operator: ANDERSONDP  
 Unit (Port): 1 Hrs/mile since oil Chg: 33 Analysis: 07/09/2001 22:15

Hydraulic	Wear Summary	Cutting Wear	Sliding Wear	Fatigue Wear	NonMetallic Wear
-----------	--------------	--------------	--------------	--------------	------------------

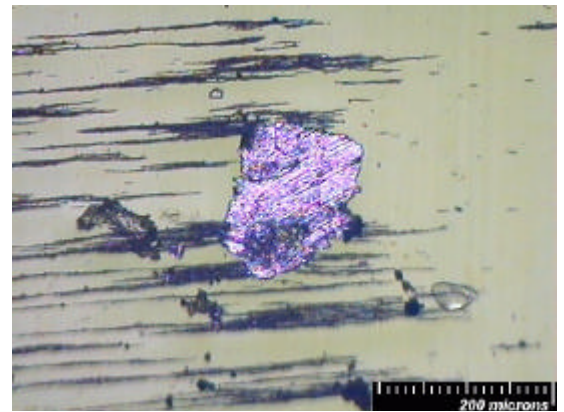
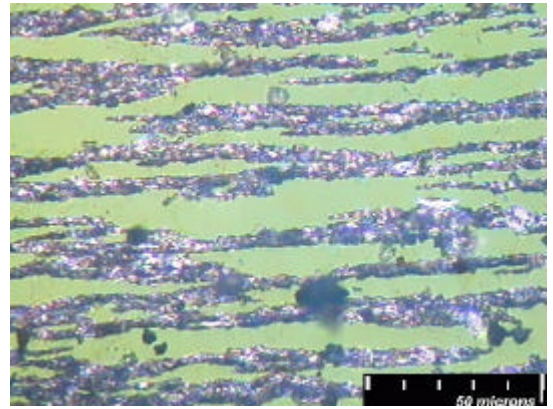
Total Part/ml: 11367.2 Vol(ml): 0.644  
 Avg Diameter: 2.2 # Frames: 4,028  
 Std Diameter: 4.0  
 Max Diameter: 60.2

	Num/ml	Mean (micron)	Std (micron)	Max size (microns)
Cutting:	3.1	26.0	1.3	29.3
Severe Sliding:	32.6	27.5	8.3	60.2
Fatigue:	55.9	24.5	5.8	54.0
NonMetallic:	12.4	28.0	4.3	37.7

Previous  Current

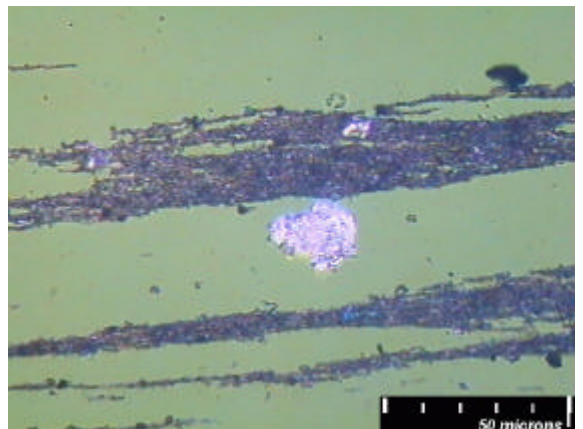
# Samples=31

Back | Wear Images | Print | Export Current Sample  
 Trend / Diagnosis | Edit Sample Info



**Lasernet Fines - C**

#objects: 70 object: 0  
 Filter: No Filter  
 BACK | << | >> | SAVE IMAGE | SAVE ALL OBJECT | PRINT IMAGE



**Lasernet Fines - C**

Customer Site:	Notes:	Fluid Type:	10W30
Machine: 01020000	Sample#:	Operating Hr/mile:	534
Equip Name:	Hrs. mile since overhaul:	534	Operator: ANDERSONDP
Unit (Port): 1	Hrs/mile since oil Chg:	23	Analysis: 07/03/2001 22:07

Hydraulic:	Wear Summary	Cutting Wear	Sliding Wear	Fatigue Wear	NonMetallic Wear
------------	--------------	--------------	--------------	--------------	------------------

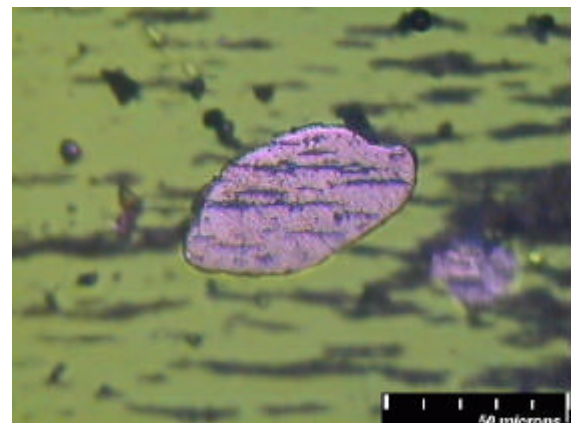
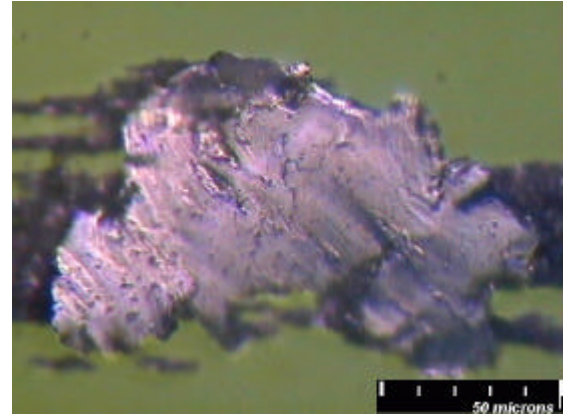
Total Part/ml:	24492.6	Vol(ml):	0.3
Avg Diameter:	3.5	# Frames:	1,876
Std Diameter:	4.6		
Max Diameter:	88.1		

	Num/ml	Mean (micron)	Std (micron)	Max size (microns)
Cutting:	3.3	20.1	0.0	20.1
Severe Sliding:	43.4	34.1	18.9	88.1
Fatigue:	133.4	27.4	12.3	84.8
NonMetallic:	13.3	24.9	6.1	33.5

Previous:  Current:

# Samples=31

Buttons: Back, Wear Images, Print, Export Current Sample, Trend / Diagnosis, Edit Sample Info



**Lasernet Fines - C**

BACK #objects: 453 object: 0 Filter: Fatigue SAVE IMAGE SAVE ALL OBJECT PRINT IMAGE

